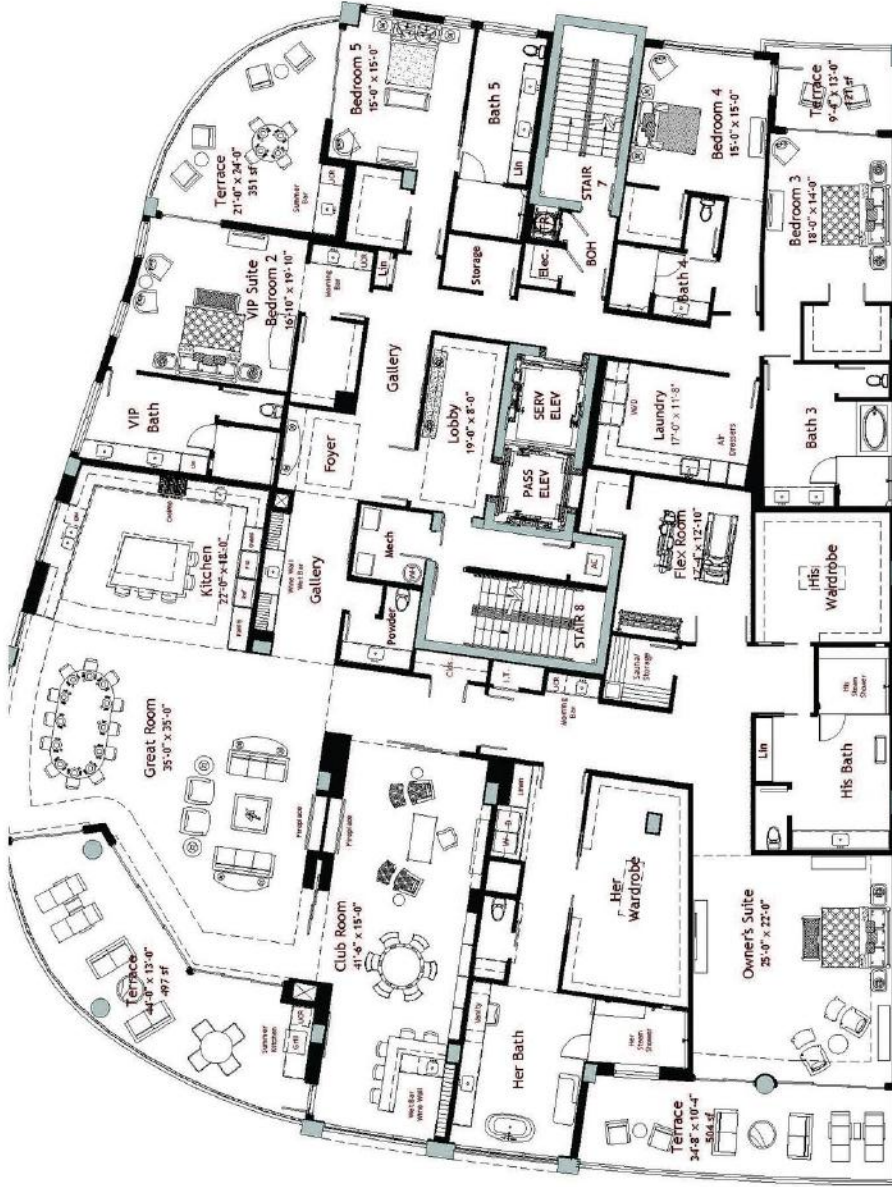
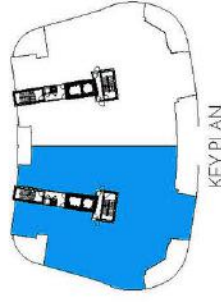


# NORTH TOWER

## GPH RESIDENCE 04

5 Bedrooms • 6.5 Baths • 12-foot Ceilings  
 Owner's Suite with His and Hers Wardrobe  
 VIP Suite with En Suite Bath  
 Great Room • Club Room • Flex Room  
 Service Elevator

Living Area	8,867 sq. ft.
Terraces	1,325 sq. ft.
<b>Total Residence</b>	<b>10,192 sq. ft.</b>



STATED LIVING AREA IS MEASURED TO THE EXTERIOR FACE OF EXTERIOR WALLS, WITHOUT EXCLUDING AREAS THAT MAY BE OCCUPIED BY COLUMNS OR OTHER STRUCTURAL COMPONENTS. THIS METHOD OF MEASUREMENT VARIES FROM, AND IS LARGER THAN, THE DIMENSIONS THAT WOULD BE DETERMINED BY USING THE DESCRIPTION AND THE DEFINITION OF THE UNIT SET FORTH IN THE DECLARATION. CORNER GENERALLY ONLY INCLUDES THE INTERIOR APERTURE BETWEEN THE PERIMETER WALLS AND EXCLUDES STRUCTURAL COMPONENTS. ALL DIMENSIONS ARE APPROXIMATE AND MAY VARY WITH ACTUAL CONSTRUCTION. MEASUREMENTS OF ROOMS/TERRACES SET FORTH ON THIS FLOOR PLAN ARE TAKEN AT THE GREATEST POINTS OF EACH ROOM/TERRACE (AS IF THE ROOM WERE A PERFECT RECTANGLE), WITHOUT REGARD FOR ANY CORNERS OR IRREGULARITIES. ACCORDINGLY, THE AREA OF THE ACTUAL ROOM WILL TYPICALLY BE SMALLER THAN THE PRODUCT OBTAINED BY MULTIPLYING THE STATED LENGTH TIMES WIDTH. ALL FLOOR PLANS AND DEVELOPMENT PLANS ARE SUBJECT TO CHANGE. THE DEVELOPER EXPRESSLY RESERVES THE RIGHT TO MAKE MODIFICATIONS, REVISIONS, AND CHANGES WITHOUT NOTICE. ALL REVISIONS OF FURNISHINGS, APPLIANCES, BUILDINGS, COUNTERTOPS, SINKS, FLOOR COVERINGS, LIGHTING, LANDSCAPING AND OTHER MATTERS OF DETAIL, INCLUDING, WITHOUT LIMITATION, ITEMS OF FINISH AND DECORATION, ARE CONCEPTUAL ONLY AND ARE NOT NECESSARILY INCLUDED IN EACH UNIT. CONSULT YOUR PROSPECTUS AND PURCHASE AGREEMENT. SEE ADDITIONAL DISCLOSURES ON LAST PAGES.



**STOCK**  
RESIDENCES