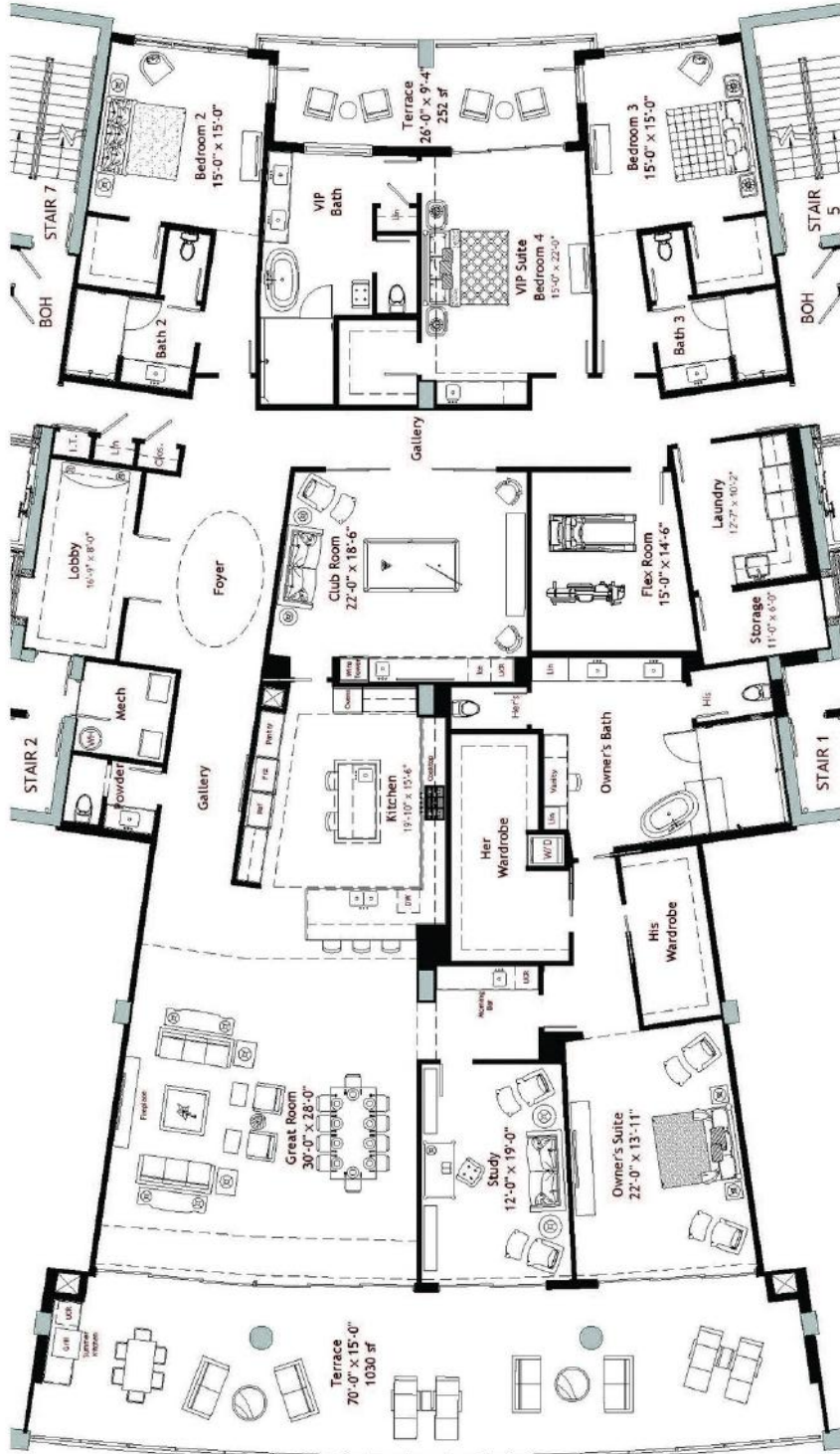
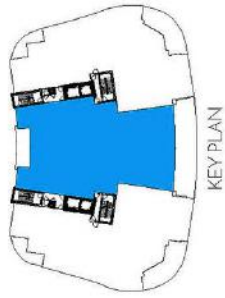


NORTH TOWER

PH RESIDENCE 05

4 Bedrooms • 4.5 Baths • 11-foot Ceilings
Owner's Suite with His and Hers Wardrobe & Study
VIP Suite with En Suite Bath
Great Room • Club Room • Flex Room
Service Elevator

Living Area	6,311 sq. ft.
Terraces	1,282 sq. ft.
Total Residence	7,593 sq. ft.



STATED LIVING AREA IS MEASURED TO THE EXTERIOR FACE OF EXTERIOR WALLS, WITHOUT EXCLUDING AREAS THAT MAY BE OCCUPIED BY COLUMNS OR OTHER STRUCTURAL COMPONENTS. THIS METHOD OF MEASUREMENT TENDS TO OVERSTATE THE AREA OF A ROOM. THE DIMENSIONS THAT WOULD BE DETERMINED BY USING THE DESCRIPTION AND THE DEFINITION OF THE UNIT SET FORTH IN THE DECLARATION, WHICH GENERALLY ONLY INCLUDES THE INTERIOR APERTURE OF THE INTERIOR WALLS AND EXCLUDES STRUCTURAL COMPONENTS, ARE DIMENSIONS FOR APPROXIMATE, AND MAY VARY WITH ACTUAL, CONSTRUCTION. MEASUREMENTS OF ROOMS/ TERRACES SET FORTH ON THIS FLOOR PLAN ARE TAKEN AT THE GREATEST POINTS OF EACH ROOM/ TERRACE (AS IF THE ROOM WERE A PERFECT RECTANGLE), WITHOUT REGARD FOR ANY CORNERS OR IRREGULARITIES. ACCORDINGLY, THE AREA OF THE ACTUAL ROOM WILL USUALLY BE SMALLER THAN THE PRODUCT OBTAINED BY ADDING THE STATED LENGTH TIMES THE STATED WIDTH. ALL FLOOR PLANS AND DEVELOPMENT PLANS ARE SUBJECT TO CHANGE. THE DEVELOPER EXPRESSLY PRESERVES THE RIGHT TO MAKE MODIFICATIONS, REVISIONS, AND CHANGES WITHOUT NOTICE. ALL MEASUREMENTS OF DIMENSIONS, APPOINTMENTS, BUILDINGS, COUNTERTOPS, LIGHTING, FURNISHINGS, LIGHTING, LANDSCAPING AND OTHER MATTERS OF DETAIL, INCLUDING, WITHOUT LIMITATION, ITEMS OF FINISH AND DECORATION, ARE CONCEPTUAL ONLY AND ARE NOT NECESSARILY INCLUDED IN EACH UNIT. CONSULT YOUR PROSPECTUS AND PURCHASE AGREEMENT. SEE ADDITIONAL DISCLOSURES ON LAST PAGES.